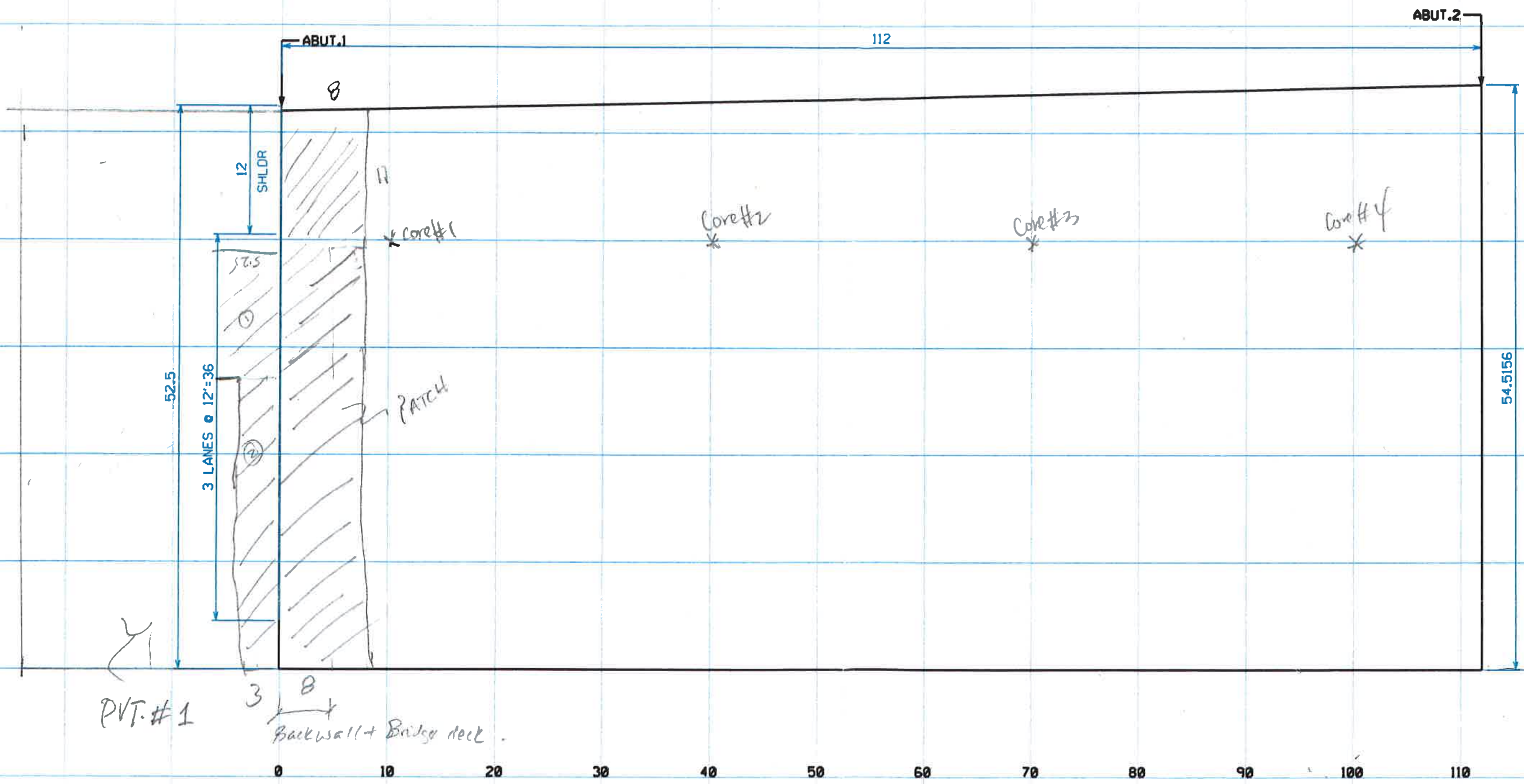


Left Shoulder + Edge Curb ~~shown~~

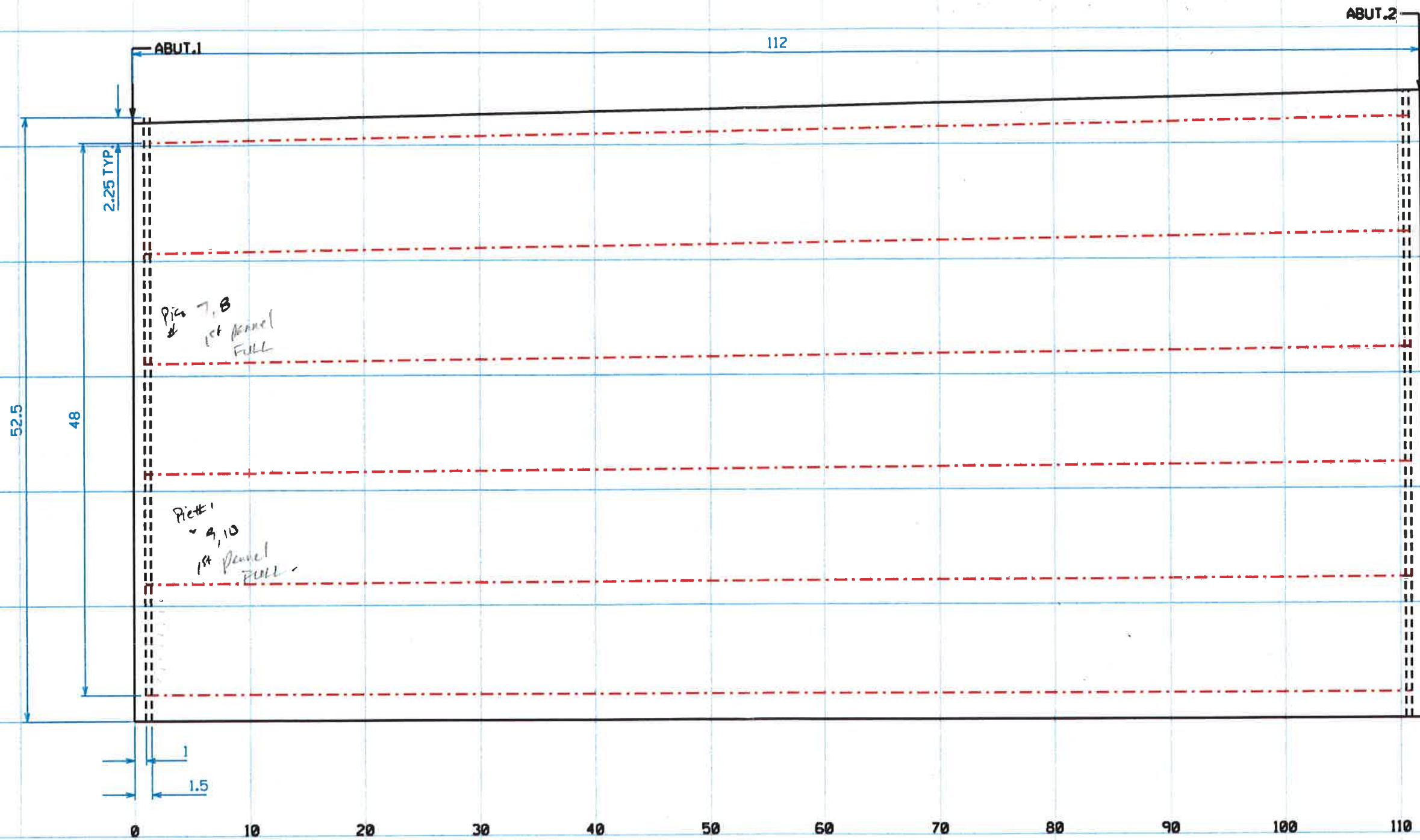
PVT. #2



PVT. #1

3 8
Backwall + Bridge deck

STATE OF TENNESSEE DEPARTMENT OF TRANSPORTATION OFFICE OF BRIDGE INSPECTION AND REPAIR	BRIDGE NO. 19-1440-4.36L	COUNTY: DAVIDSON	BRIDGE LENGTH : 112'	P# 1 OF 1 LEFT LANE TRAFFIC DIRECTION W.B.L.
	BRIDGE FED ID* : 1910400030	SCALE : 1:10	BRIDGE WIDTH : VARIES 52.5' TO 54.51'	
	CROSSING: CRAIG AVE.	SKÉW : 90°	DATE : 08-11-2017	
			DRAWN ASHRAF ARMANIOS	



STATE OF TENNESSE DEPARTMENT OF TRANSPORTATION OFFICE OF BRIDGE INSPECTION AND REPAIR	BRIDGE NO. 19-1440-4.36L	COUNTY: DAVIDSON	BRIDGE LENGTH : 112'
	BRIDGE FED ID : 1910400030	SCALE : 1:10	BRIDGE WIDTH : VARIES 52.5' TO 54.51'
	CROSSING: CRAIG AVE.	SKEW : 90°	DATE : 08-11-2017
			DRAWN ASHRAF ARMANIOS

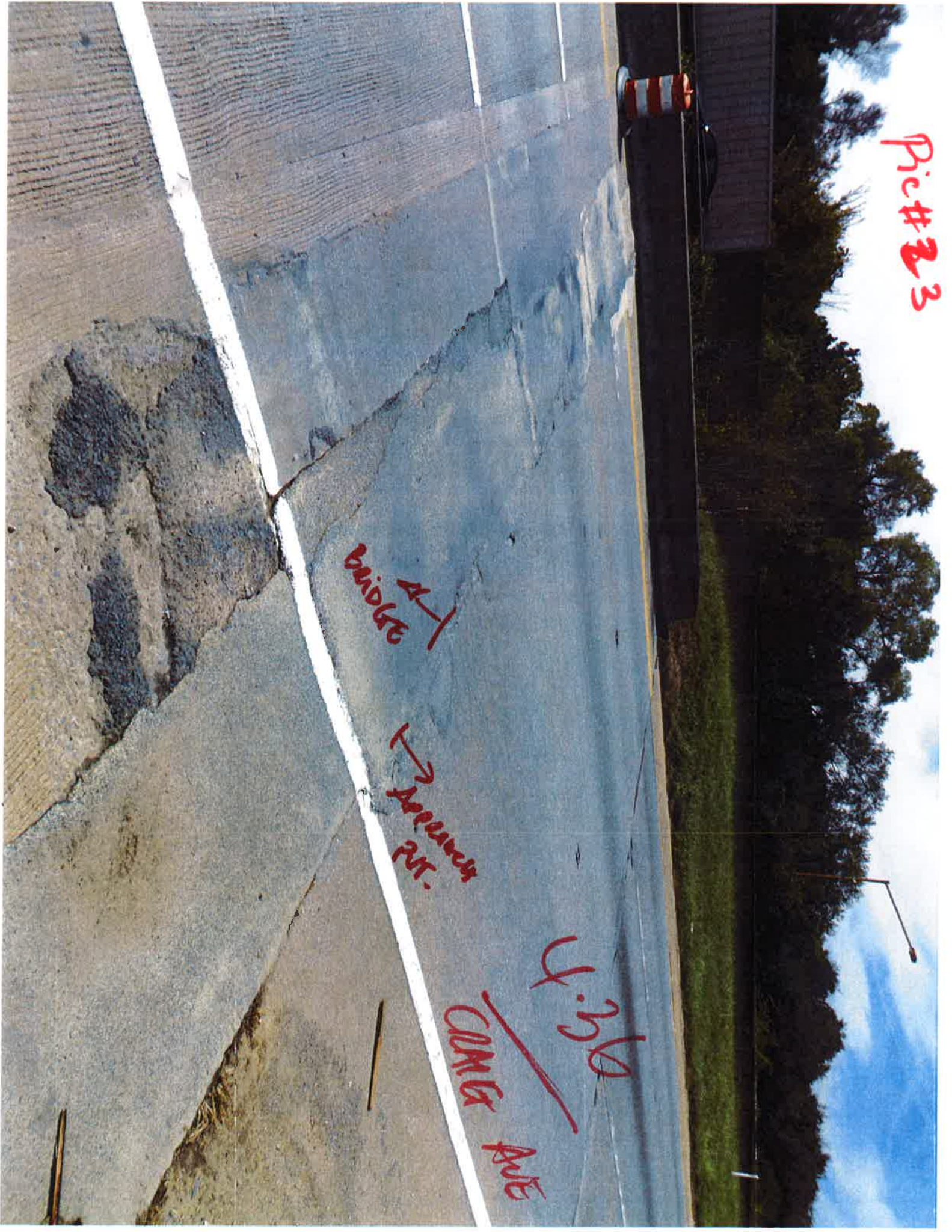
P# ① OF ①
 LEFT LANE
 TRAFFIC DIRECTION
 W.B.L

Pic# 23

A-1
bridge

→ APPROX
PNT.

4.20
CHINA
AUE



Photographs

Bridge ID#: 19104400030

Date: 03/04/2016

4/26/16 / center line



DECK PANEL BAY "B" ABUT. #1 SPALL & EXP. STL



CLEARANCE VIEW LT. SIDE

*From 2016
Report*

PRODUCED PURSUANT TO
PUBLIC RECORDS REQUEST
This document is covered by 23 USC §409
And its production pursuant to a public
document records request does not
waive the provisions of §409

4.3062 / CRMC

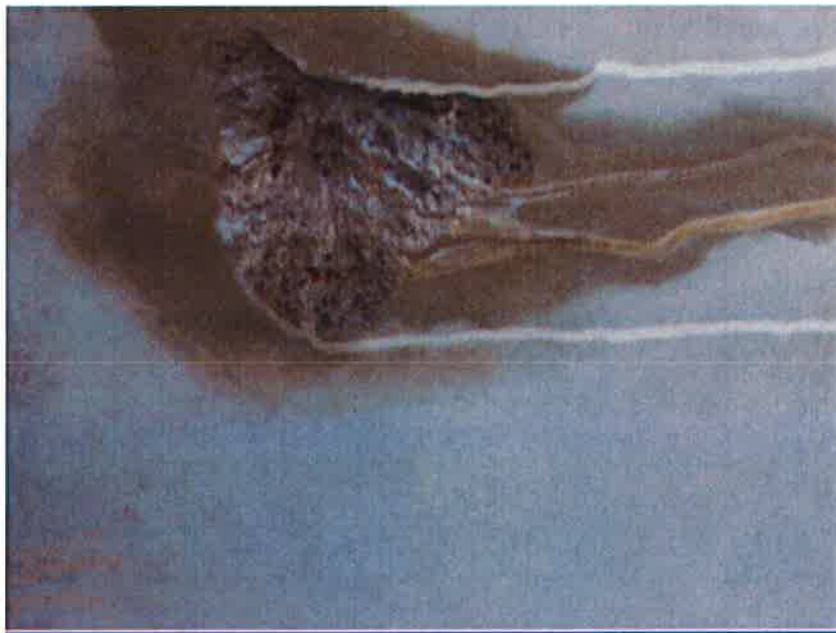
Photographs

Bridge ID#: 19104400030

Date: 03/04/2016



BOTTOM OF DECK



DECK PANEL BAY "D" ABUT. #1 W/ SPALL

From 2016
REPORT

PRODUCED PURSUANT TO
PUBLIC RECORDS REQUEST
This document is covered by 23 USC §409
And its production pursuant to a public
document records request does not
waive the provisions of §409

Pick #10

2nd PM

4-26-10
Jan 10

436 L / GAMA

4TH band

Pic # 7